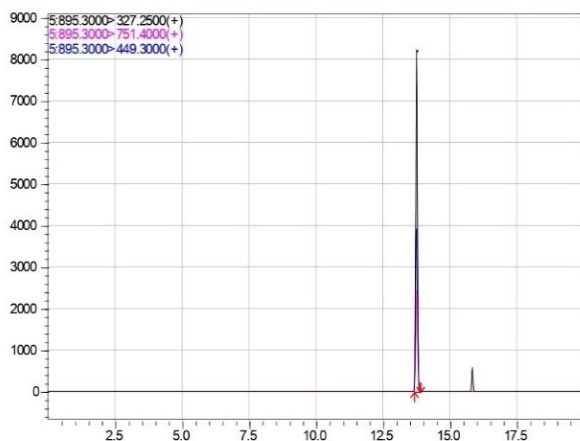
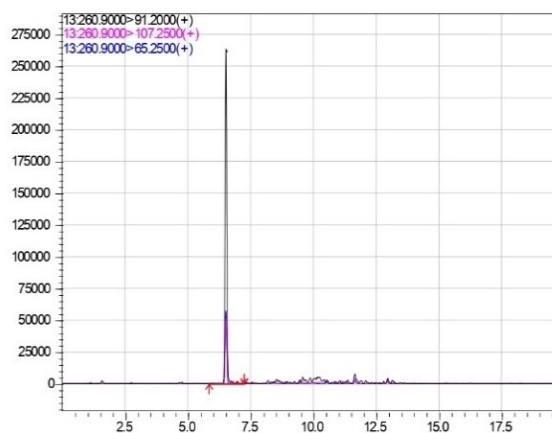


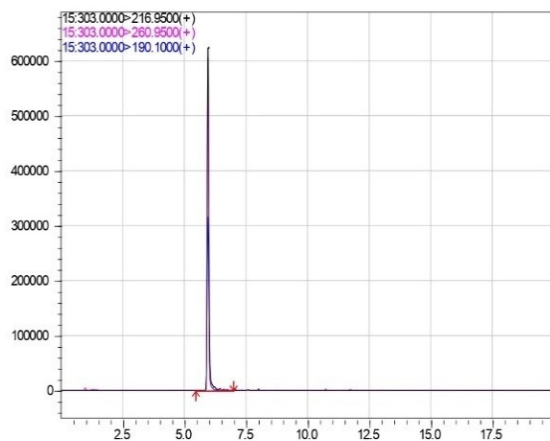
Supplementary Materials



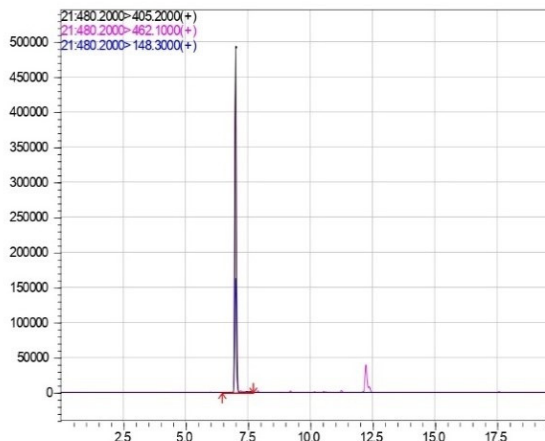
Abamectin



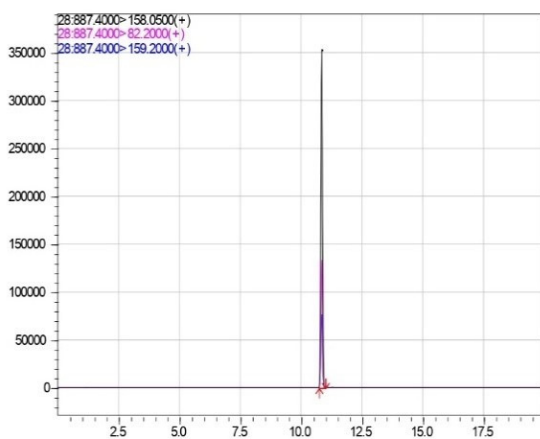
Benznidazole



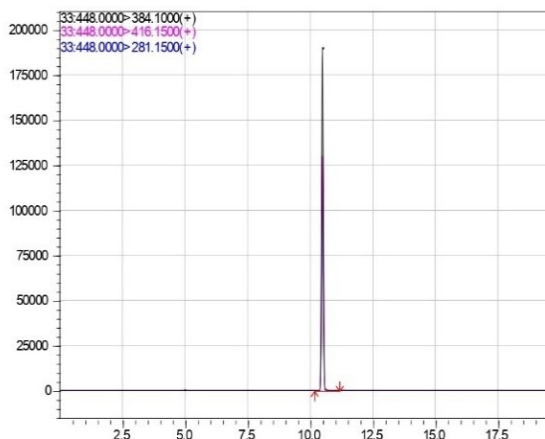
Cambendazole



Derquantel

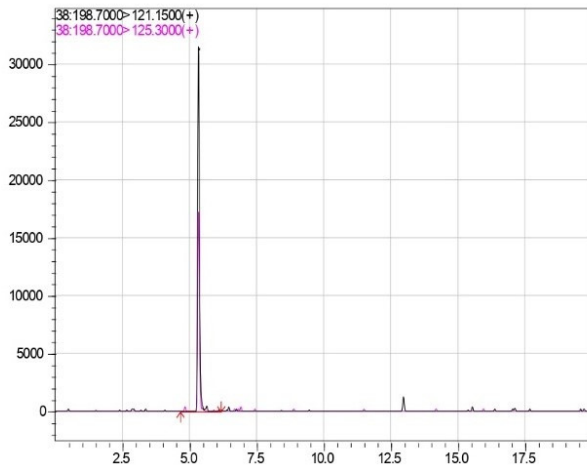


Emamectin

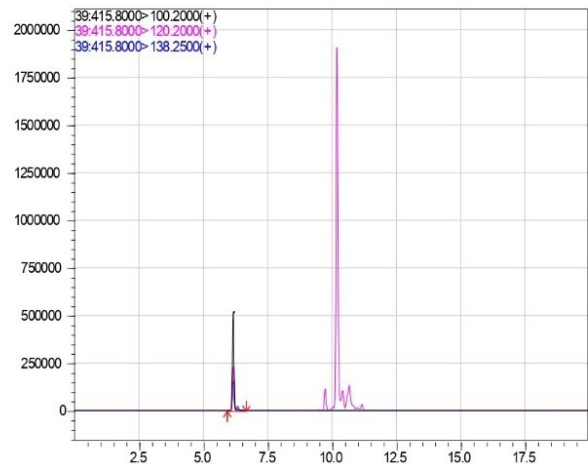


Febantel

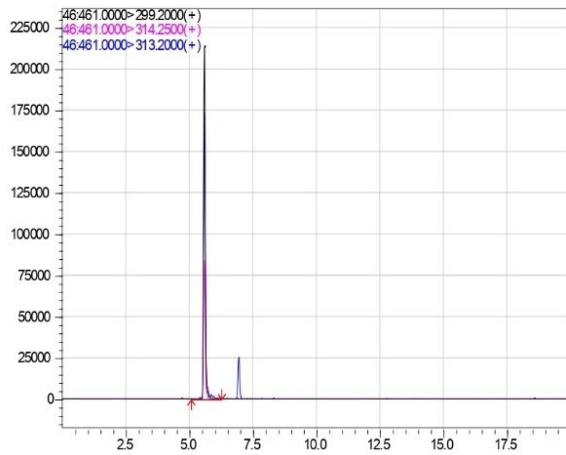
Fig. S1. UHPLC-MS/MS representative chromatograms of the target compounds in beef. Febantel and isomatamidium=100 µg/kg; other compounds=10 µg/kg; black=quantification ions; red and blue=qualification ions. UHPLC-MS/MS, ultra-high-performance liquid chromatography–tandem mass spectrometry.



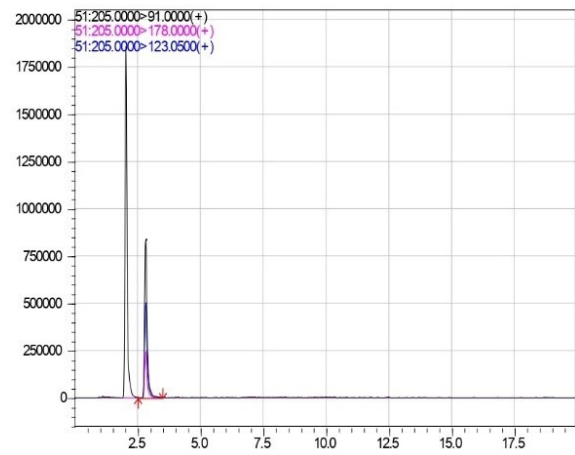
Guaifenesin



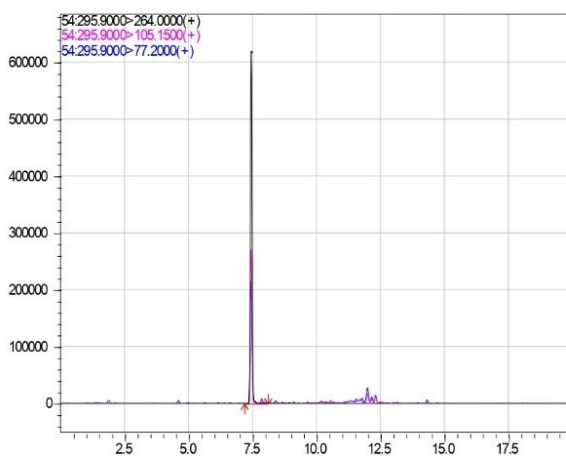
Halofuginone



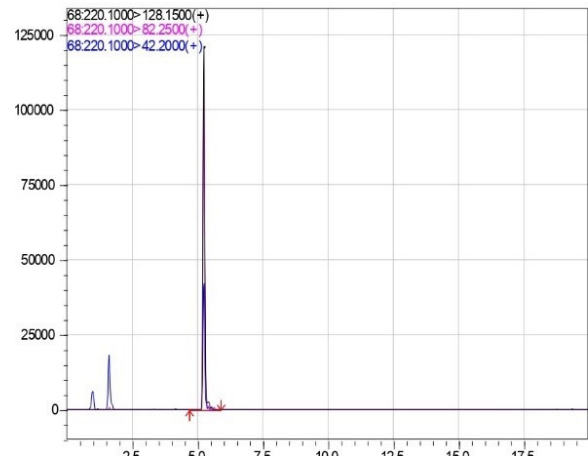
Isometamidium



Levamisole

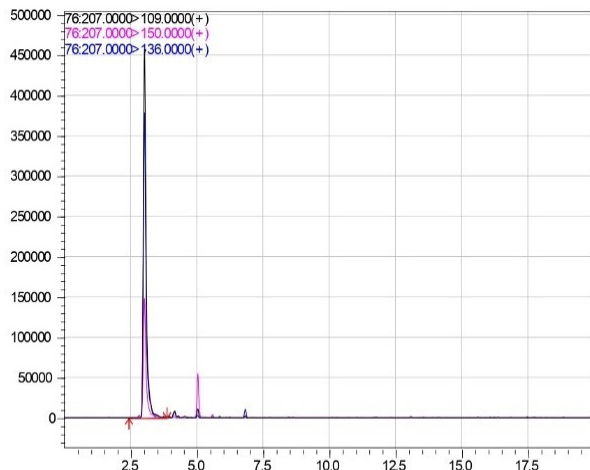


Mebendazole

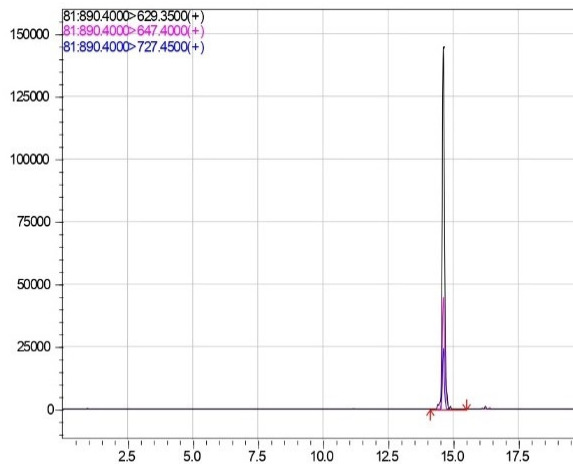


Ornidazole

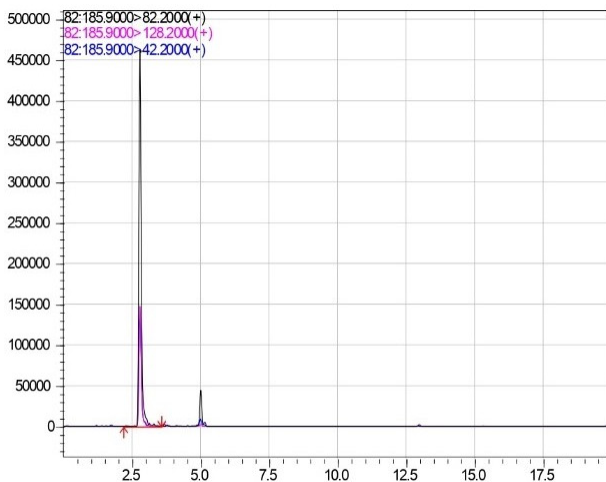
Fig. S1. UHPLC-MS/MS representative chromatograms of the target compounds in beef. Febantel and isometamidium=100 µg/kg; other compounds=10 µg/kg; black=quantification ions; red and blue=qualification ions. UHPLC-MS/MS, ultra-high-performance liquid chromatography–tandem mass spectrometry (continued).



Pyrantel



Senduramicin



Ternidazole

Fig. S1. UHPLC-MS/MS representative chromatograms of the target compounds in beef. Febantel and isomatamidium=100 µg/kg; other compounds=10 µg/kg; black=quantification ions; red and blue=qualification ions. UHPLC-MS/MS, ultra-high-performance liquid chromatography–tandem mass spectrometry (continued).